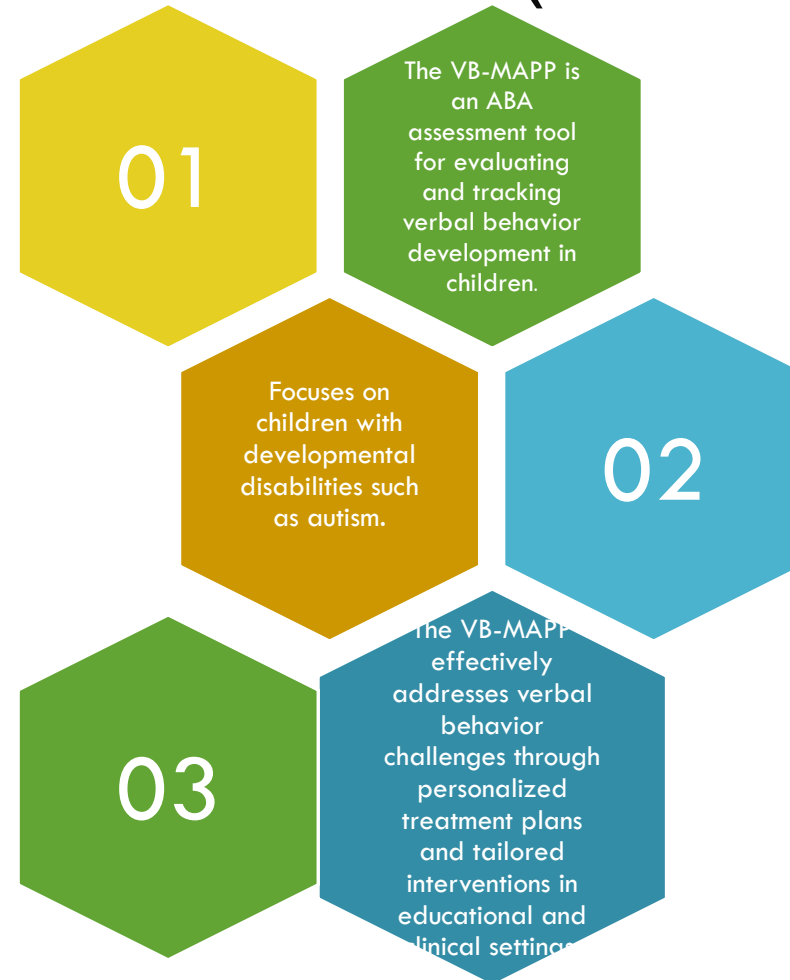


IMPLEMENTING THE VERBAL BEHAVIOR MILESTONES ASSESSMENT AND PLACEMENT PROGRAM (VB-MAPP): TEACHING ASSESSMENT TECHNIQUES

Clarissa S. Barnes, James R.
Mellor, and Ruth Anne Rehfeldt

WHAT IS THE VERBAL BEHAVIOR MILESTONES ASSESSMENT AND PLACEMENT PROGRAM (VB-MAPP)?



Milestones Assessment:

This section evaluates 170 measurable learning and language milestones across three developmental levels, focusing on different verbal behavior repertoires such as manding, tacting, and intraverbals.



Barriers Assessment:

This identifies 24 common learning and language barriers that might hinder a child's progress, such as prompt dependency, defective echoic behavior, or problem behaviors that interfere with learning.

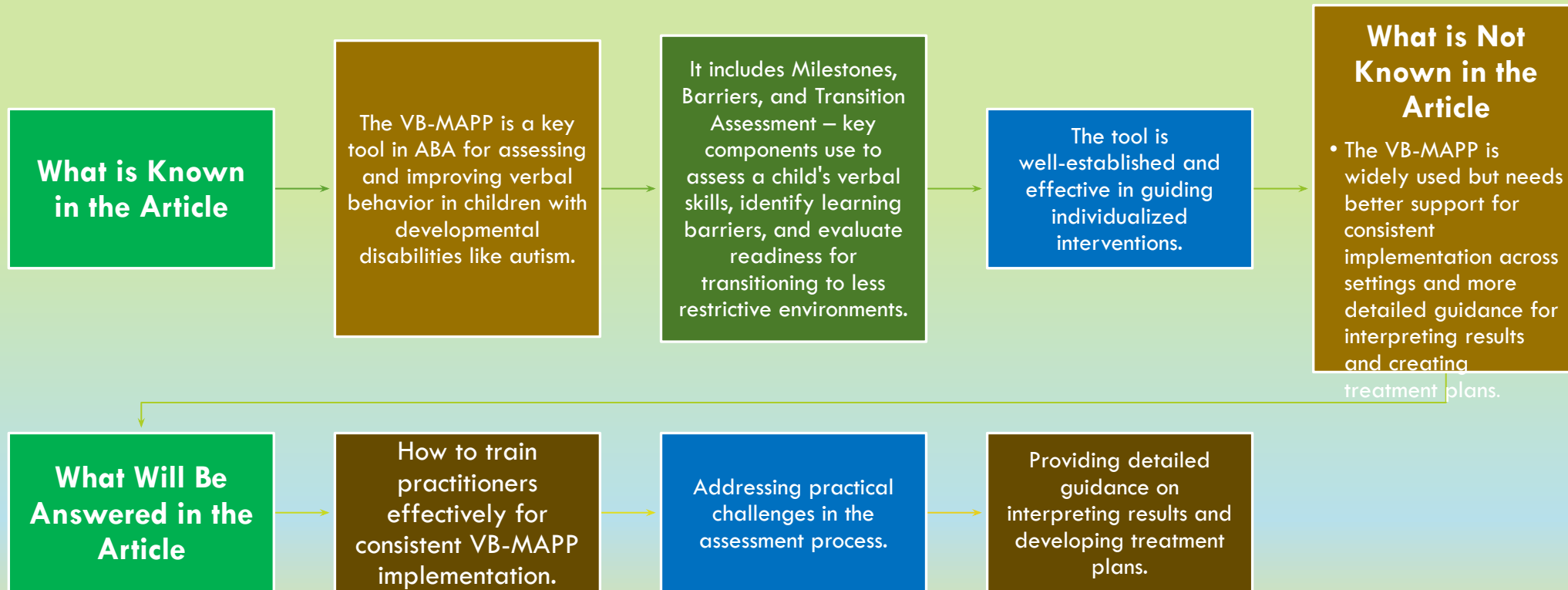


Transition Assessment:

This component evaluates a child's readiness to transition from an intensive ABA program to a less restrictive educational setting.

THREE KEY COMPONENTS OF VB-MAPP

INTRODUCTION

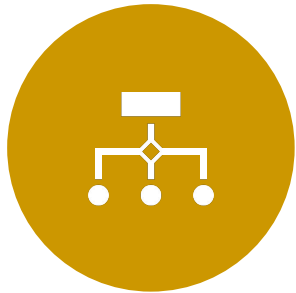


**Methodology:**

The VB-MAPP uses Milestones, Barriers, and Transition assessments to evaluate verbal skills, identify obstacles, and assess readiness, following standardized procedures.

**IMPLEMENTATION:**

Effective VB-MAPP use requires thorough practitioner training, consistent scoring, and adherence to protocols, as well as strategies for successful application.

**PRACTICAL APPLICATION:**

The VB-MAPP is practical for real-world use, effectively creating individualized intervention plans and addressing verbal behavior challenges involving children with disabilities, such as autism.



METHODOLOGY, IMPLEMENTATION AND PRACTICAL APPLICATION

METHODOLOGY - CASE STUDIES AND PRACTICAL EXAMPLES

The article includes case studies demonstrating the successful real-world application of the VB-MAPP.

One example involves a child with significant language barriers who, through VB-MAPP-guided interventions, shows measurable improvement in verbal communication skills.



Thorough Practitioner Training:

Ensure practitioners are well-trained in verbal behavior principles and assessment procedures.



Consistent Scoring:

Maintain uniformity in scoring to ensure reliability and validity.



Adherence to Protocols:

Follow standardized procedures for accurate assessment and implementation.



Regular Monitoring:

Continuously evaluate and adjust implementation practices as needed.



Use of Case Studies:

Apply insights from real-world examples to inform individualized interventions.

THE STRATEGIES FOR SUCCESSFUL
VB-MAPP APPLICATION INCLUDE:

RESULTS



The article presents evidence of the VB-MAPP's effectiveness through case studies and practical examples.



Children assessed with the VB-MAPP showed measurable improvements in verbal behavior and overall communication skills when interventions were tailored based on the assessment results.



The VB-MAPP's ability to identify specific learning barriers enabled practitioners to address these challenges directly, leading to more targeted and effective interventions.



The Transition Assessment component provided insights into when a child was ready to move to a less restrictive educational setting, ensuring timely and appropriate transitions for the child's development.

01

The authors conclude that the VB-MAPP is a powerful tool for assessing and improving verbal behavior in children with developmental disabilities.

02

Proper implementation, with thorough training and consistent scoring, is crucial for its effectiveness.

03

The VB-MAPP helps identify verbal abilities and guides personalized treatment plans, leading to significant improvements in communication skills.

04

The article stresses the need for ongoing education and training for successful use across different settings.

CONCLUSION

REFERENCE

Barnes, C. S., Mellor, J. R., & Rehfeldt, R.A. (2014). Implementing the Verbal Behavior Milestones Assessment and Placement Program (VB-MAPP): Teaching Assessment Techniques. *Behavior Analysis in Practice*, 30(1), 36-47.
<https://doi.org/10.1007/s40616-013-0004-5>